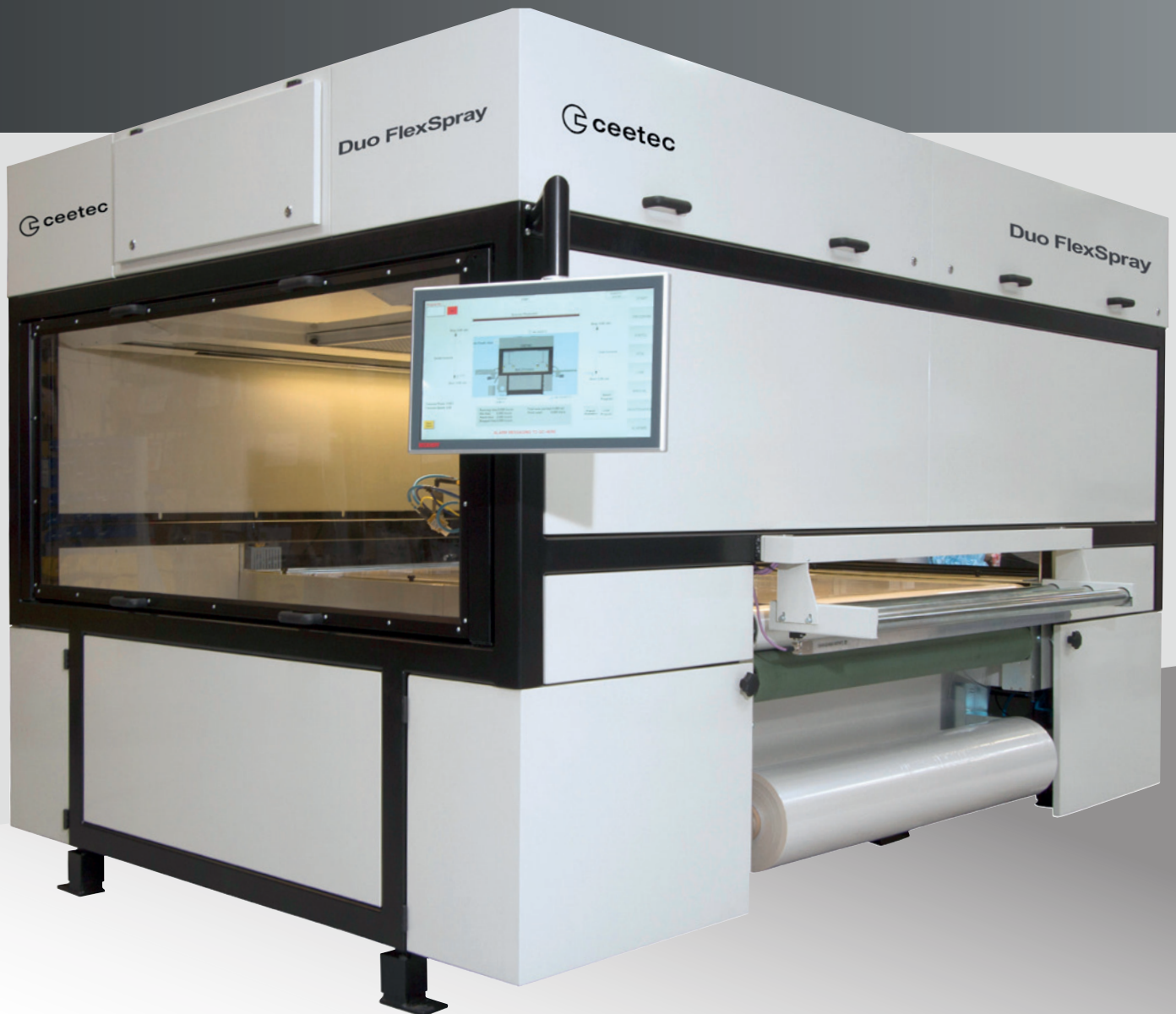




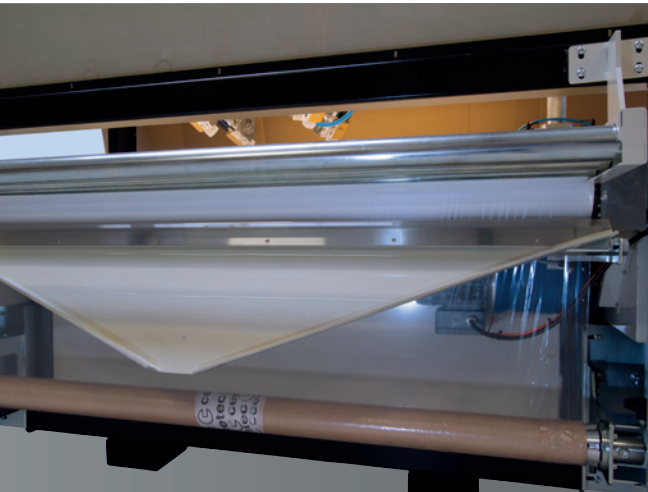
Based on danish quality since 1970



Duo FlexSpray

The market's most user- and energy friendly all-in-one automatic spraying machine in a production line or as a stand-alone solution.

With its built-in 19-inch touch screen, user-friendly control programme and low energy consumption, Duo FlexSpray is one of the most attractive spraying automatic machines on the market for lacquering of doors, kitchen cabinet doors, furniture and other profiles. Its innovative automatic spraying system makes this machine fast and easy to clean minimising the stop time when changing paints. Paint change takes only 2-3 minutes. Our wide product range of equipment guarantees that you get an automatic spraying machine customised according to your current production line.



Technical data

Capacity	from 2 meter/minute to 10 meter/minute
Object dimensions	Up to 100 mm high and up to 1,300 mm wide
Number of paint circuits	Two by default with an option to purchase a third one
Number of guns	Four by default with an option to purchase up to 12 more
Power consumption	10,5 kW 16A
Electrical connection	3x380V + PE + N
Inlet height	844 mm (+/-50 mm)
Weight	1,900 kg
Length, width, height	2400x3400x2300 mm
Direction of flow	Optional

Flexible and Energy-friendly Automatic Spraying Machine with the Latest Technology

Duo FlexSpray with the latest technology

The fast and easy service and the latest technology guarantee the highest spraying quality.

You not only get the most energy-friendly automatic spraying machine on the market, but you also get inexpensive operation. Thanks to new technology, the maintenance of the automatic spraying machine is reduced to a minimum while its service life is considerably extended.

Our simplified conveyor belt cleaning system or the use of the foil system reduces the cleaning liquid consumption to a minimum.

The control unit, from Beckhoff, delivers the latest technology within industrial PC and servo drives. The electrical control cabinet and air injection filter are integrated into the compact automatic spraying machine so there is only one unit in the production.

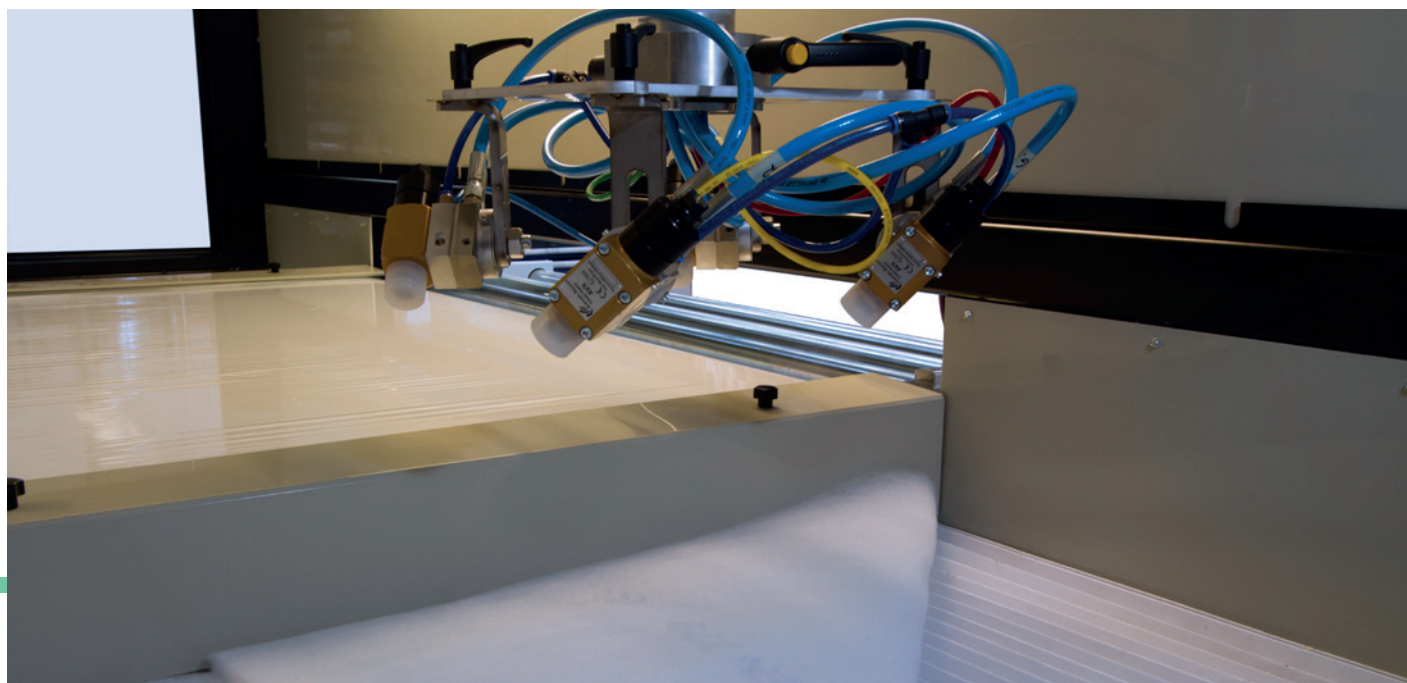
High level of customisation

When designing Duo FlexSpray, Ceetec had flexibility in mind all the time. The automatic spraying machine offers several options for customising the machine according to your needs so that you get an optimal production line. For example, the automatic spraying machine can handle up to 12 guns and the built-in dimensions can be adapted to your production.

Duo FlexSpray equipment

Customise Duo FlexSpray according to your needs using a wide range of equipment:

- Paint kitchen with pumps in lacquer room
- Customised roller conveyors in inlet and outlet
- Line control option
- Conveyor belt cleaning system with lacquer recovery
- Automatic raising and lowering of guns to several layers via the touch panel
- Coloured side walls

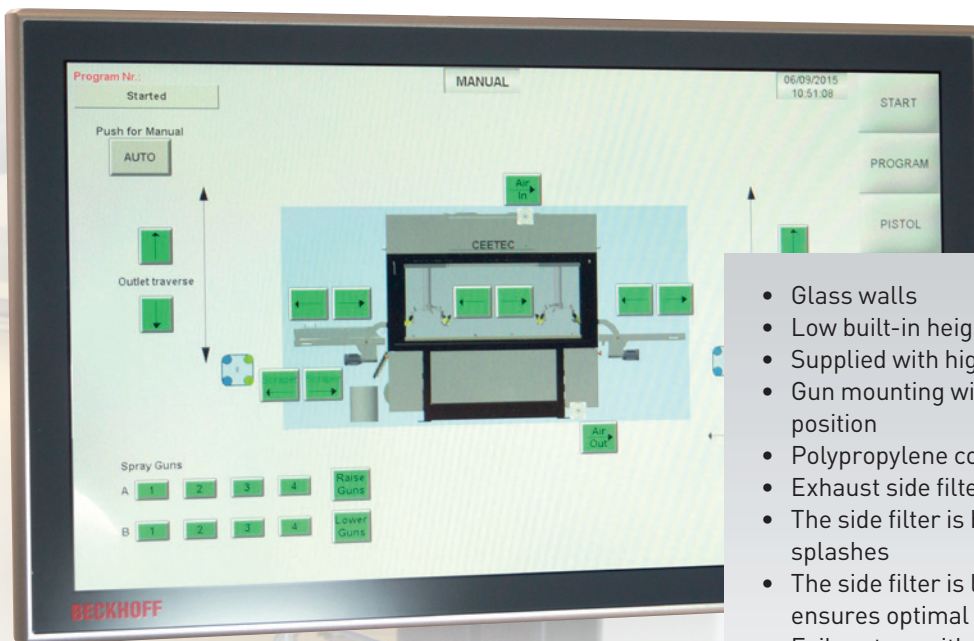


Consulting and hands-on training

We at Ceetec have extensive experience in installing automatic spraying machines in production lines. This experience guarantees that Duo FlexSpray will be effectively integrated into your existing reduction line. In order to get off to a good start, you get hands-on training in using and maintaining the automatic spraying machine.

Book a demonstration

Call
+45 64 42 14 73



- Glass walls
- Low built-in height, only 2,300 mm height
- Supplied with high-quality components
- Gun mounting with an indication of the precise gun position
- Polypropylene covering for easier cleaning
- Exhaust side filter with Andrea filter and plane filter
- The side filter is bevelled for capturing dust and splashes
- The side filter is lowered automatically and ensures optimal access
- Foil system with lacquer recovery included by default
- Paint change system for fast and easy changing of paints from the touch screen
- User-friendly access for service and maintenance

The Most User-friendly Control Programme on the Market

One of Ceetec's basic principles is that the machines must be simple and easy to operate. With Duo FlexSpray we have set a new standard thanks to a PC-based control system and the biggest touch screen on the market where all functions are accessible.

The control system offers remote access via a VPN connection so that service, expansions and software updates can be made by Ceetec without disrupting your production.

The integrated touch screen is easy to operate. We have optimised its interface so that you can easily achieve a perfect result.

The automatic spraying machine is equipped with automatic air flow and air pressure control in the spray cabin in order to guarantee uniform results every single time.

Get started with Duo FlexSpray in no time

Duo FlexSpray will be up and running in no time. The installation itself is plug-and-play. Connect the power, the exhaust system, lacquer and air supply and the automatic spraying machine is ready for use.

Everything is combined in one and the same unit so that it is easy to integrate into a new or existing production facility.

Danish quality since 1970

Ceetec was founded in 1970. Over the years Ceetec has manufactured machines for the global market with a focus on simplicity and simple operation. Today, Ceetec is a highly specialised niche company with solid knowledge of our sector. Our product range consists of roll formers, sanding and painting machines.



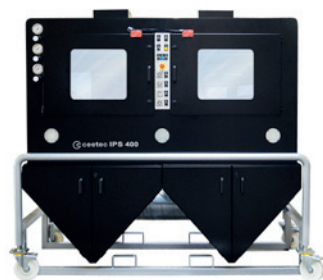
Brushing machine P40



Brushing machine A250



Brushing machine IP250 Touch



Automatic spraying machine IPS400



**Automatic brushing/
spraying machine IPC250**



Sanding machine IS250

Ceetec A/S
Industrivej 7
DK-5580 Nørre Aaby
Danmark

+45 64 42 14 73
info@ceetec.dk
ceetec.dk

 **ceetec**
Based on danish quality since 1970